


## *New Products*

### ***Magnetically Levitated Turbo-Molecular-Pump***


Wide range models TMP-203/303/403/803/1003M/MC/LM/LMC

**Sizes 200 until 1000 l/s, standard- and corrosive- versions**

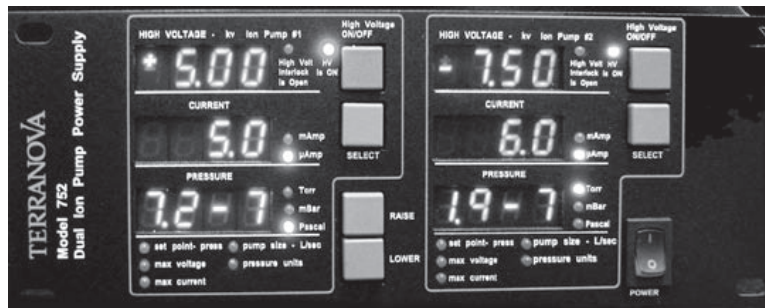
	<p><b>Main Features</b></p> <ol style="list-style-type: none"><li>1. The Power supplies, which use no battery, are the first half rack size units for turbo molecular pumps of magnetically levitated type.</li><li>2. No maintenance is required for the power supply.</li><li>3. The pump main body and the power supply are both compact and lightweight.</li><li>4. An RS-232C serial interface is supplied as standard.</li><li>5. No readjustment is required after the replacement of the cables and pump main bodies.</li><li>6. The self diagnostic functions ensure easy location of faulty part(s).</li><li>7. The cable is available in any length between 3 meters and 30 meters.</li></ol>
--	--

### ***Residual Gas Analyzer***

**Quadrupole Mass Analyzer + Ion Gauge + Pirani Gauge  
XT Series**

	<p>Hositrاد Vacuum Technology presents a Single device, mounted on a 2 ¾ inch flange, contains a Pirani gauge, an ion gauge, and a quadrupole mass analyzer. As the vacuum system is rough pumped, the Pirani gauge starts to make measurements. When ready, the ion gauge turns on and finally when the pressure is low enough, the Quadrupole is activated for partial pressure measurements. All models start at 1 amu. The XT100 goes to 100 amu. The XT200 goes to 200 amu and the XT300 goes to 300 amu, available with Faraday/Channeltron Multiplier or Farady Cup only.</p>
---	--

## Terranova®752 Dual Ion Pump Control/Display



The **Terranova Model 752 Dual Ion Pump Control Unit** is designed to supply operating power to two sputter ion pumps and to display the voltage, current and pressure independently for each.. It is designed to start and operate pumps of 60 l/s and smaller and to operate larger pumps of any size at lower pressures

### TWO INDEPENDENT SUPPLIES/CONTROLS

- Programmable High Voltage Output: 3.5 KV to 7.5 KV
- Up to 50 Watts Power for High Pressure Operation
- User configured High Voltage Polarity, Positive or Negative
- Programmable Maximum Current, Pump Size for Pressure Display
- Programmable Process Control SetPoint
- Choice of Pressure Units; torr, mbar, pascal
- Display for voltage, current and pressure
- RS 232 Serial I/O for Data Collection and Computer Control
- Analog Outputs for Monitoring Voltage and Current
- Ground Sensing Circuit for Operator Safety

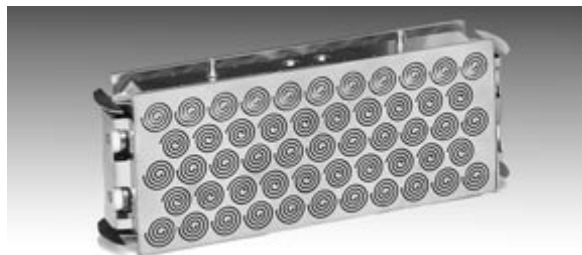
## Ion Pumps

**NEW - Ion Pumps - 10 l/s to 400 l/ Diode, Noble Diode and Galaxy™ Technology**



### Features

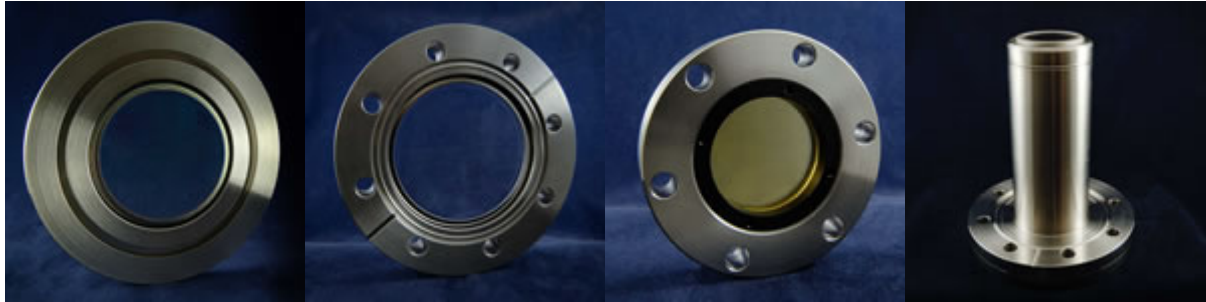
- Improved Element Design
- Choice of Element Technology - Standard Diode - Galaxy Diode - Noble Diode
- Efficient, Modular Design
- Choice of High Voltage Feedthrough Standard: HVFT-5125 Fischer-Style Fault-Safe  
Optional: HVFT-5143 Varian-Style HVFT-5120 Varian Starcell Style FT-PE-133 PE-Style



### The new Galaxy™ Technology has:

- 1 The air, hydrogen and water-vapor pumping speed and capacity of a standard diode.
- 2 The air/argon stability of triode, Starcell™ and differential/noble ion elements.
- 3 Lower price than the differential ion/noble diode which contain expensive tantalum.
- 4 Longer life and better low pressure operation than the triode.

## Viewports



Hositrاد Vacuum Technology offers a range of competitively priced UHV viewports in CF, ISO or KF formats including a variety of coatings to enhance performance. Materials include Kodial (borosilicate glass), Quartz, Sapphire, MgF<sub>2</sub>, BaF<sub>2</sub>, CaF<sub>2</sub>, ZnSe, ZnS 'Cleartran', Ge, Si and Lead Glass. Full transmission, dimensional, optical and temperature specifications can be viewed on the viewport datasheets and standard price list. Custom designed viewports can be quoted on request.

## Circular feedthroughs MIL-C-26482



Circular hermetic instrumentation feedthroughs are constructed with pin arrangements designed to meet Mil-C-26482 specifications. 19 gold plated pins are in a straight through pin-to-pin design, are hermetically sealed, and electrically insulated in a stainless steel shell using the latest in glass-ceramic technology.

Ultrahigh vacuum cable assemblies with PEEK (polyetheretherketone) connectors and Kapton® insulated ribbon cables are available to meet the demands of ultrahigh vacuum environments.

For further questions please contact us.

# VACUUM TECHNOLOGY Hositrade

## Extrel Mass Spectrometers

High performance mass spectrometry systems and components



Flange Mounted Mass Spectrometers  
RGAs to Research Instruments



Standard and Custom MS and MS/MS Systems, TPD/TDS, Clusters, Plasma Analysis, Flow Tube, Molecular Beam



MS and MS/MS Components  
Ionizers, Ion Guides, Ion Optics,  
Mass Filters, RF and  
RF/DC Power Supplies



Gas Analysis Systems  
100% to low ppt detection limits,  
EI, CI and API sources



www.extrel.com • info@extrel.com  
1-412-967-5752

### Hositrade Vacuum Technology

represent **Extrel CMS** with a full product line of high sensitivity **Quadrupole Mass Spectrometers**: RGA Systems and a unique range of Mass Spectrometry and MS/MS Components (from 1-60 amu up to 9000+ amu).

Extrel CMS has a wide range of standard and specialized application specific components that allows you to either build your own custom High Mass system or upgrade the performance of an existing analytical system. Extrel CMS also offers a number of Add-on Quadrupole Mass Spectrometers and MS/MS systems that can be used as the basis of a custom system or as a additional technique that can be added to an existing system.

*The Research product line includes full, application specific Quadrupole Mass Spectrometry Systems, Laboratory Gas Analysis Systems, Flange Mounted Quadrupole Mass Spectrometers, Residual Gas Analyzers and a unique range of Mass Spectrometry and MS/MS Components.*

### MAX LT Series of Flange Mounted Mass Spectrometers

#### A Real Mass Spectrometer for the price of an RGA.

The **MAX LT** system is the latest in Extrel's high resolution, high sensitivity, flange mounted Quadrupole Mass Spectrometers. Mounted on a 4 1/2 inch ( 63 CF ) flange the **MAX LT** series beats the competition's price and performance! It is available in 100, 200, 300 and 500 amu versions.

